

## Esc2 Control Box Upgrade Instruction

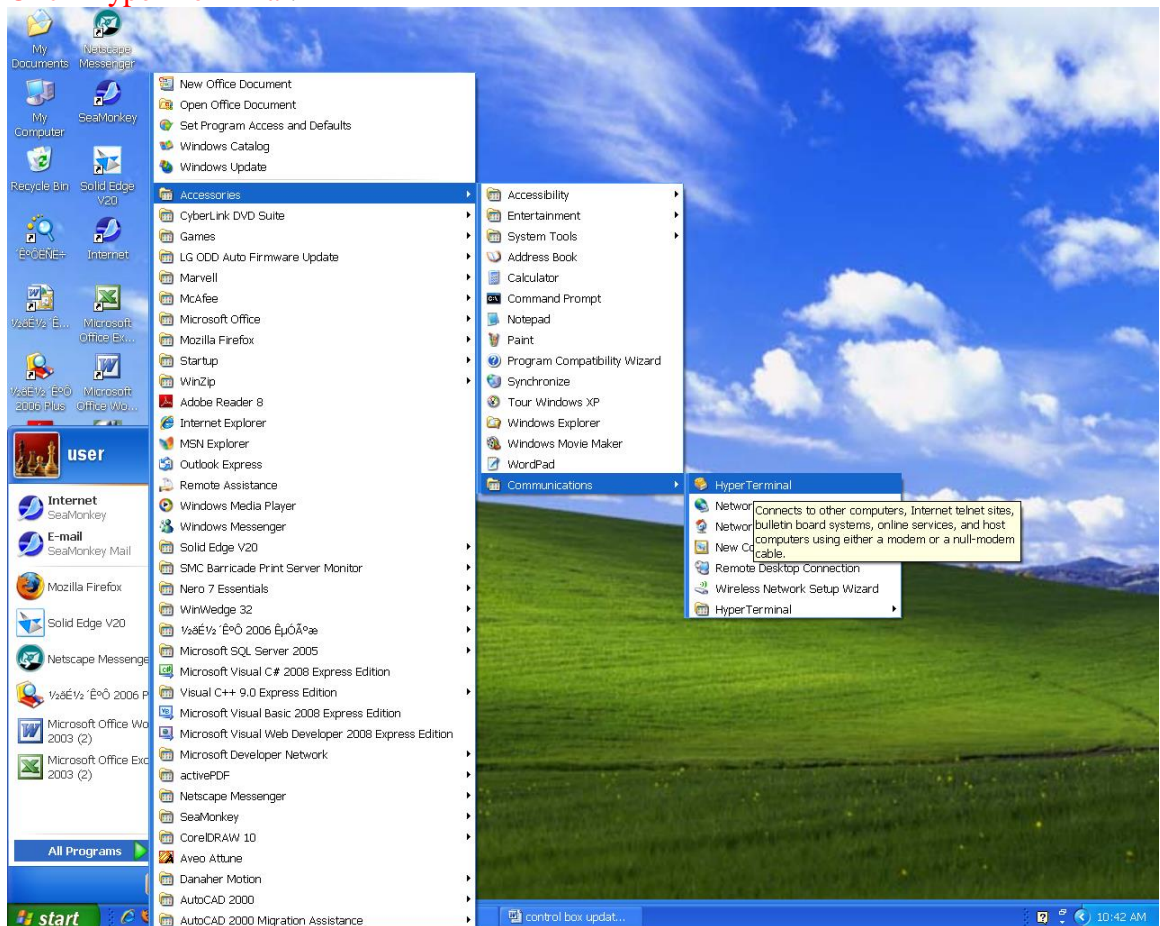
### 1. Connect to Esc2 Control Box

Use a 9 Pin Null Modem Cable provided by Agricullex Inc to establish a connection between Control Box and a computer.

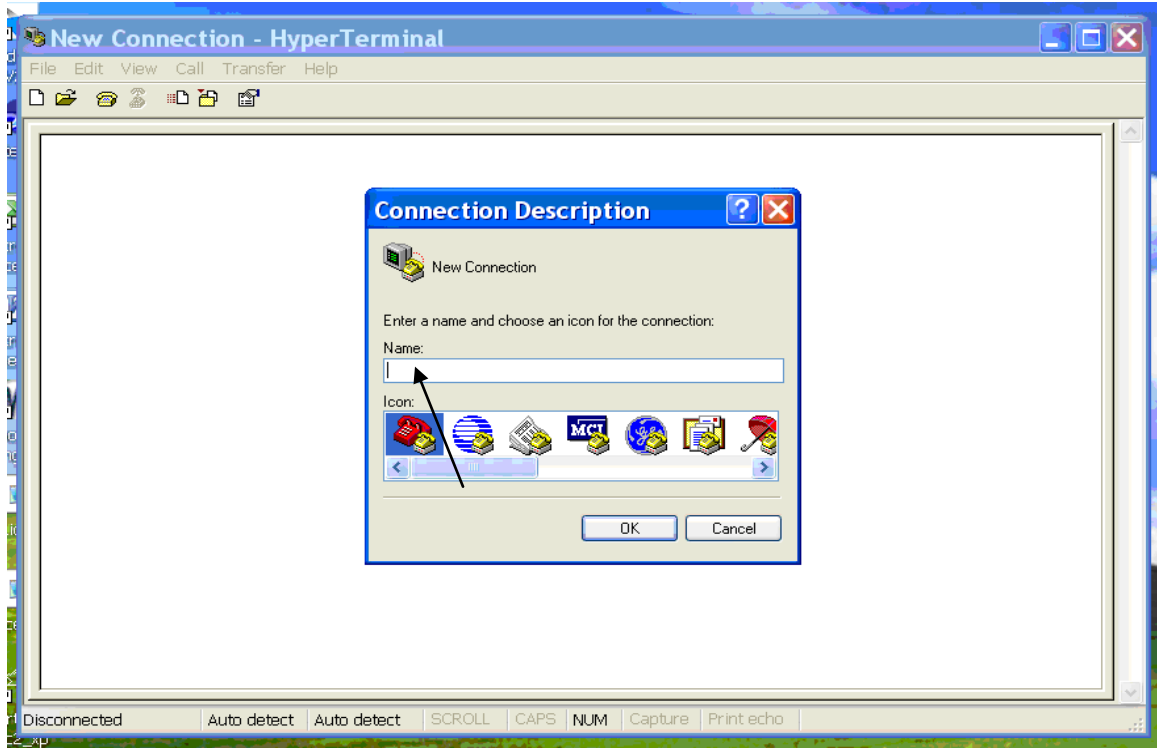
- The female connector of the cable is connected to the male connector labeled COM1 where has label NOT IN USE on the back side of **the Control Box**;
- Other female connector of the cable connects to an available COM port in your computer. This port may be COM1 or other COM port. You have to affirm which COM port you use. **Assumption**: you choose COM2.
- If you do not have any COM port available in your computer, you can use a USB port instead of a COM port. If you choose a USB port as a connection port, you need a USB to COM adapter.

### 2. Turn on your computer. **Attention: do not turn on the seed counter** at this moment

### 3. After your computer boots up, using mouse to click Start→ All Programms→accessories→Communication→Hyper Terminal **Click Hyper Terminal.**



1. Enter a name : ESC2 (you can enter any name)



Click Ok button

2. Select COM port from **Connect using** , here we assume COM2



Click OK button

3. Configuration setup as following:

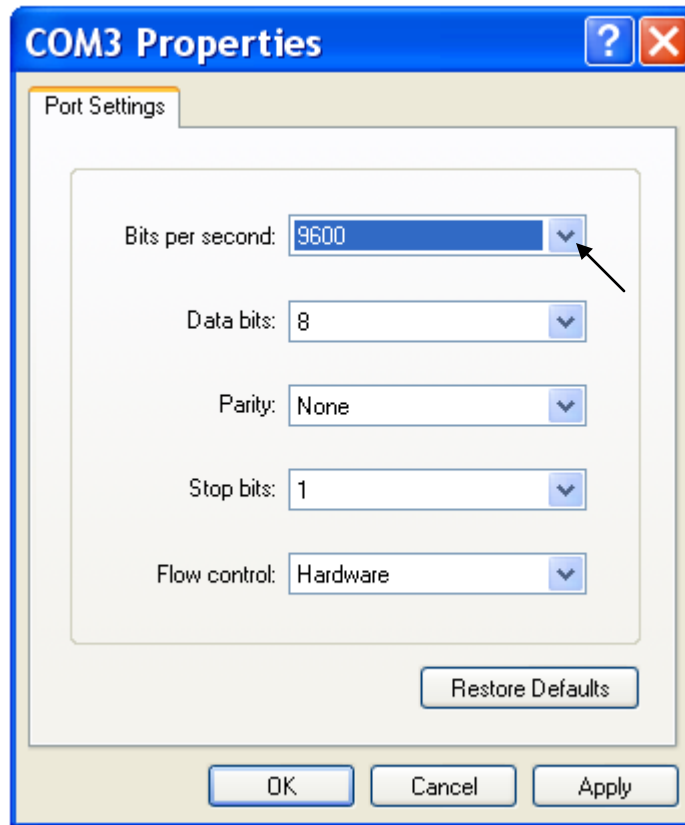
Bits per second: 9600

Data bits: 8

Parity: none

Stop: 1

Flow control: none

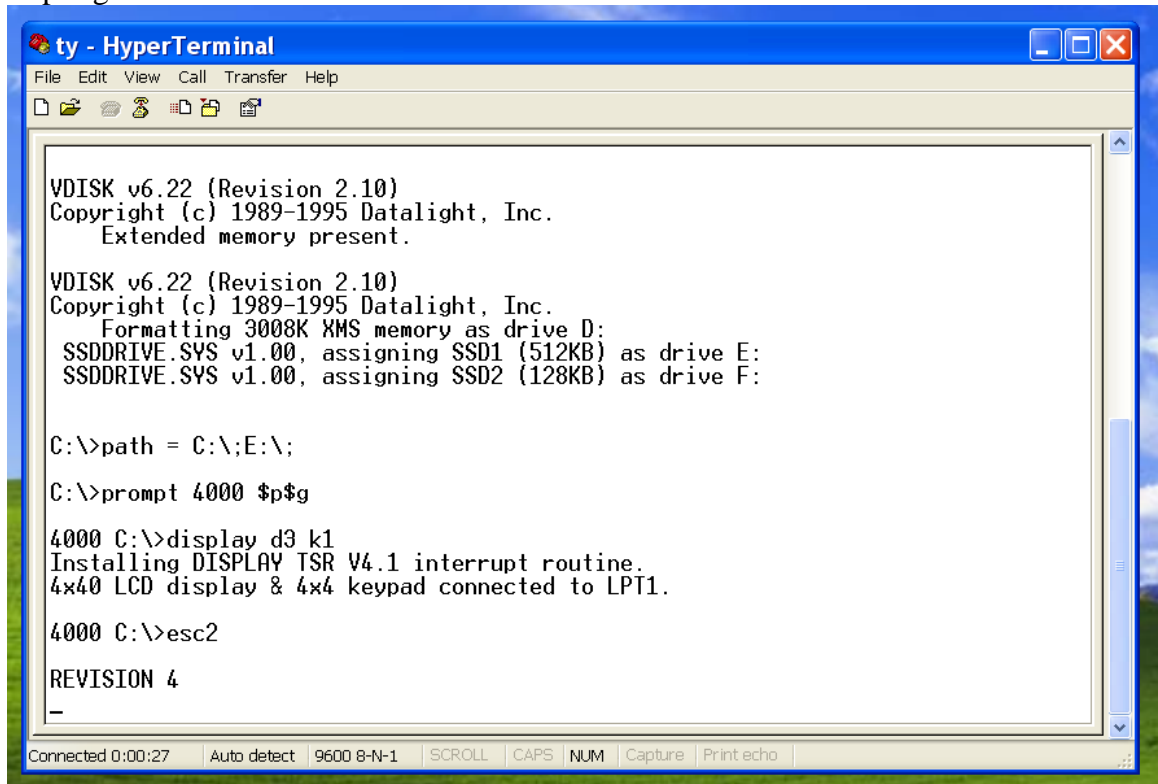


After setup, click OK button

3. Turn on the ESC-2 counter power

When you turn on the seed counter, the counter boots will appear on the Hyper Terminal window and it looks like figure as shown below.

If no booting information appears on the Hyper Terminal window, you have to turn off the counter power and exit Hyper terminate program and repeat above steps again.



```
ty - HyperTerminal
File Edit View Call Transfer Help

VDISK v6.22 (Revision 2.10)
Copyright (c) 1989-1995 Datalight, Inc.
Extended memory present.

VDISK v6.22 (Revision 2.10)
Copyright (c) 1989-1995 Datalight, Inc.
Formatting 3008K XMS memory as drive D:
SSDDRIVE.SYS v1.00, assigning SSD1 (512KB) as drive E:
SSDDRIVE.SYS v1.00, assigning SSD2 (128KB) as drive F:

C:\>path = C:\;E:\;
C:\>prompt 4000 $p$g

4000 C:\>display d3 k1
Installing DISPLAY TSR V4.1 interrupt routine.
4x40 LCD display & 4x4 keypad connected to LPT1.

4000 C:\>esc2

REVISION 4
-
```

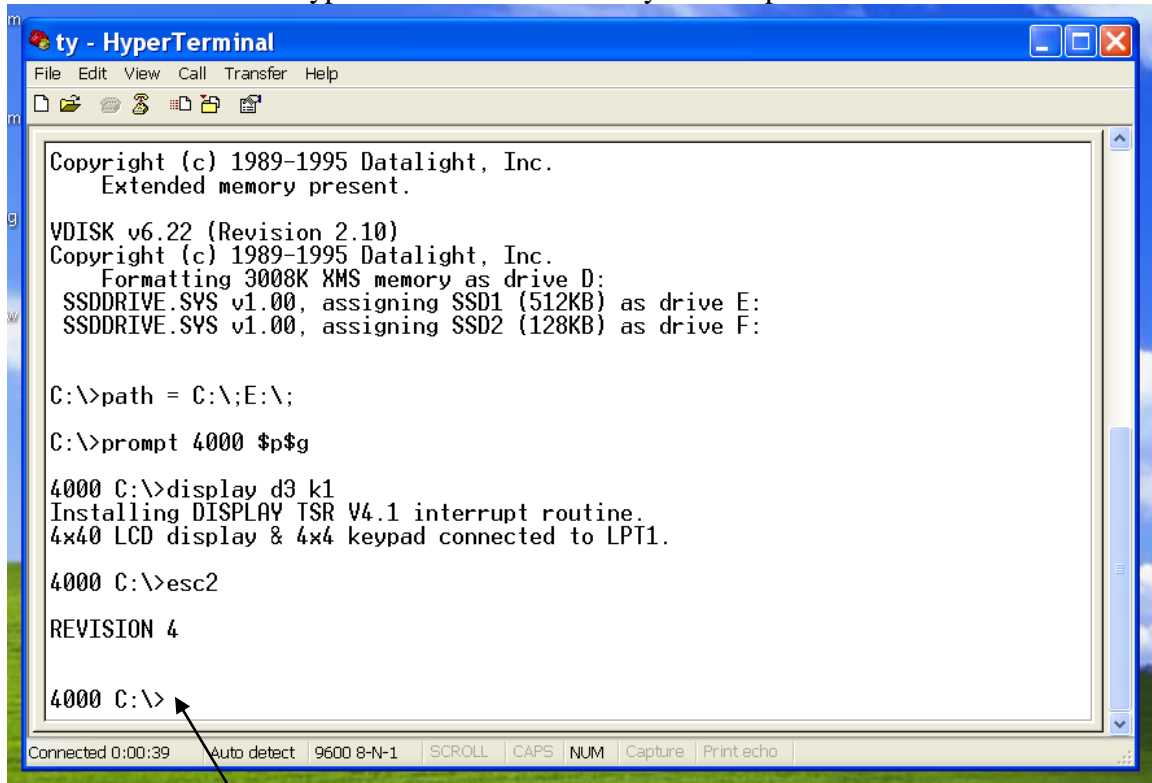
4. Now look at the console of counter's control box

1. remote mode
2. independent mode

Select number 2-independent mode→5-other→5-Halt Program→1-Halt Program

After you press 1 Halt Program button, the counter exits the counting program to wait for communication with other computer.

5. Now turn back to Hyper Terminal window in your computer



```
ty - HyperTerminal
File Edit View Call Transfer Help
Copyright (c) 1989-1995 Datalight, Inc.
Extended memory present.
VDISK v6.22 (Revision 2.10)
Copyright (c) 1989-1995 Datalight, Inc.
Formatting 3008K XMS memory as drive D:
SSDDRIVE.SYS v1.00, assigning SSD1 (512KB) as drive E:
SSDDRIVE.SYS v1.00, assigning SSD2 (128KB) as drive F:

C:\>path = C:\;E:\;

C:\>prompt 4000 $p$g

4000 C:\>display d3 k1
Installing DISPLAY TSR V4.1 interrupt routine.
4x40 LCD display & 4x4 keypad connected to LPT1.

4000 C:\>esc2

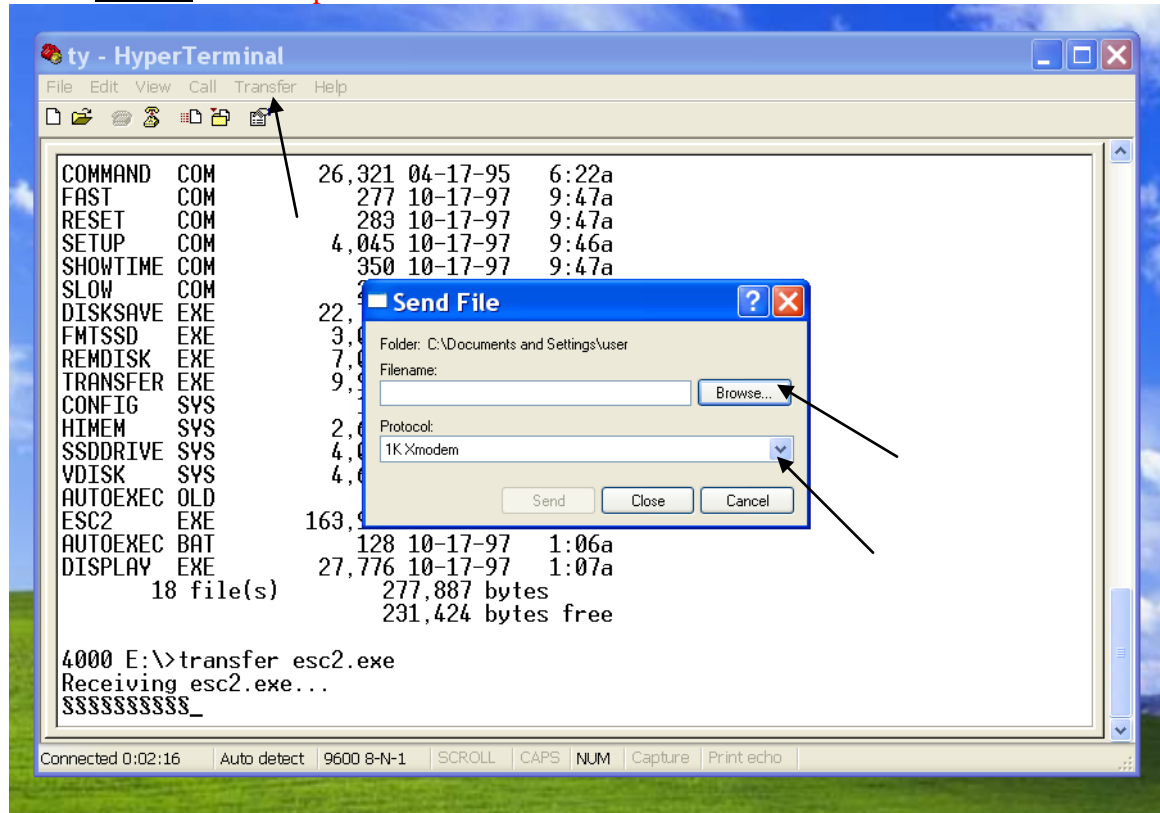
REVISION 4

4000 C:\>
```

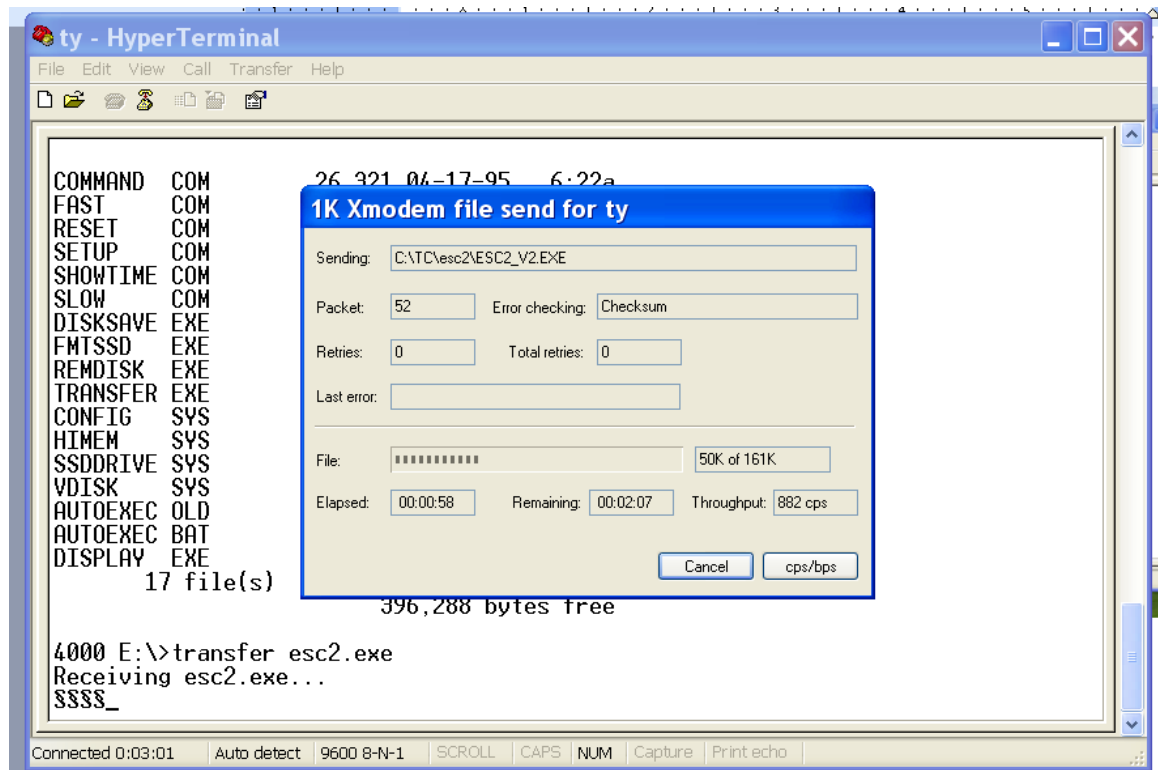
Now it is time to send the new software to instead of old one. The steps is following

```
4000 c:\>e:
4000 E:\>del esc2.exe
4000 E:\> transfer esc2.exe
```

Select transfer on the **top menu bar**



- Select send file... on the slide down menu
- choose the **1k xmodem** in Protocol text box
- click **browse...** button to select **esc2\_v2.doc** file from the fold which esc2\_v2.doc file is stored, then click open and click send



After sending esc2-v.doc file, turn off the counter and close Hyper Terminal window in your computer

6. Unplug the connection cable from the COM1 port in the control box and plug into COM2 port in the control box. Turn off counter power
7. Check upgrading

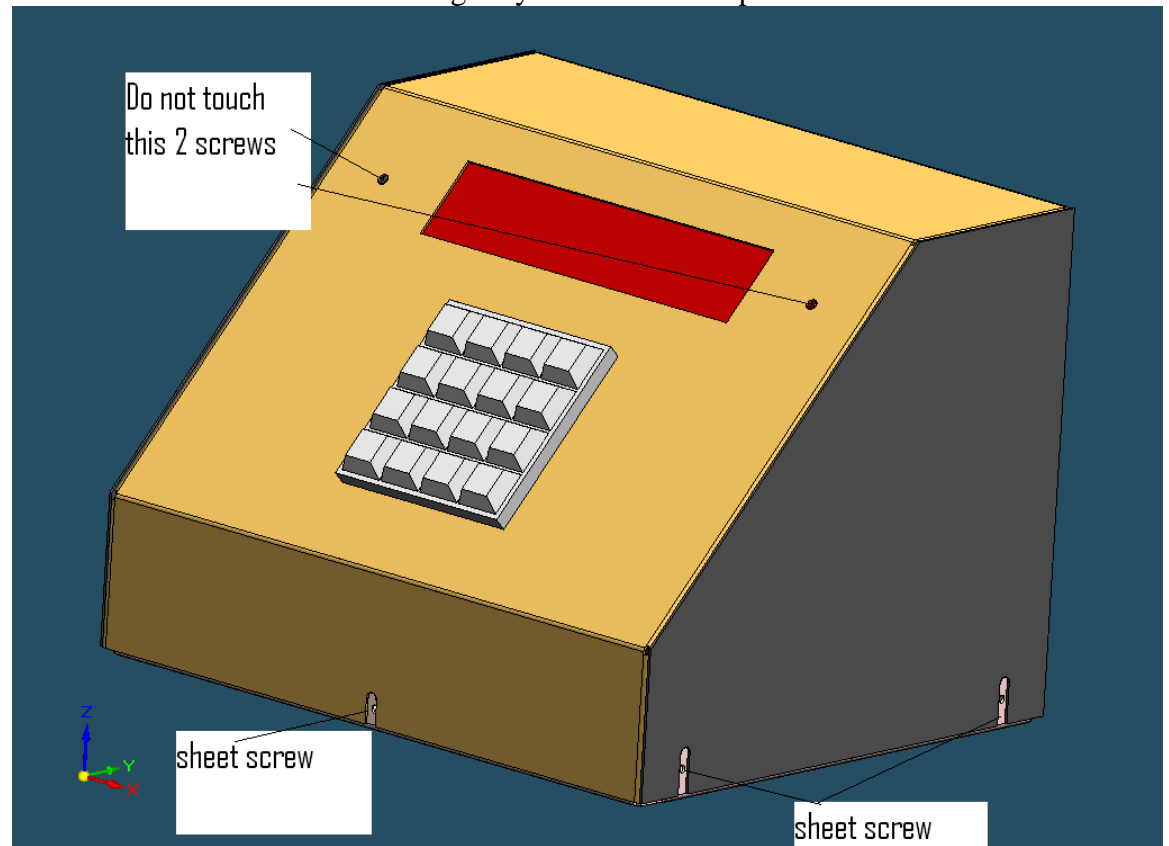
Turn on the counter again; the menu will appear on the console as shown below:

1. remote mode
2. independent mode

If above information appears on the display panel, the upgrading is OK. Otherwise, you have to go through next step: Troubleshooting

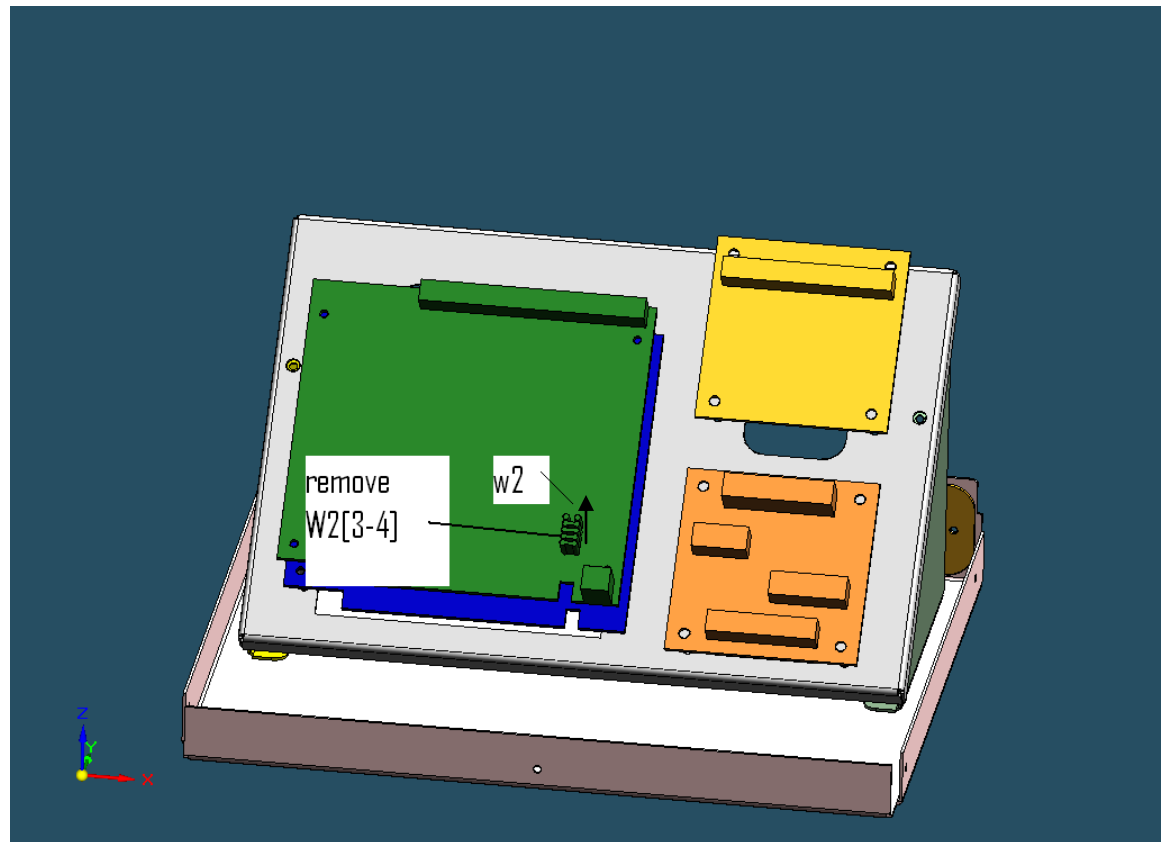
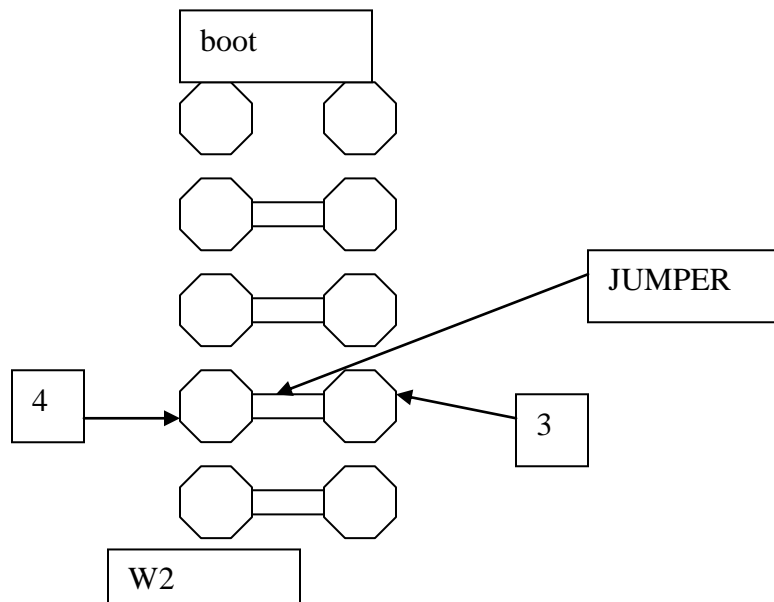
8. Troubleshooting
  - 8.1 Remove W2 [3-4] JUMPER
    - Turn off the counter power.
    - Disconnect all cables.

- Remove the sheet metal screws on the control box. The location of the screws is shown as below and gently lifts the cover up.





- Remove W2 [3-4] JUMPER.



- After removing W2[3-4] jumper, you can put the cover back( don't put screw back)

- Connect the control box to the counter;
- Connect 9 Pin Null Modem Cable to COM1 port of the control box

8.2 Transfer file again

The procedure is the same as above but you have to skip step 4

After file has been transferred, turn off the counter power

8.3 Put W2 [3-4] JUMPER back.

Lift the cover up again and put W2 [3-4] CONNECTOR back.

Put the cover back and put screw back.

Turn on the counter power; the menu will appear on the display panel.